

Testing and certification of electric and electronic products and components



Testing and certification for EMC and electrical safety.

Based on many years of experience in testing electrical professional and domestic appliances Kiwa offers a wide range of services for manufactures and import/export companies to obtain access to global markets.

For many years Kiwa is Notified Body for the Low Voltage Directive and EMC Directive. From now on, Kiwa is partner of the well known German VDE institute and is able offer the following services for electrical products:

- CE testing
- Kiwa certification
- IECEE CB certification scheme
- VDE certification
- GS certification
- Certification for North America

Kiwa has testing facilities for electrical and electronic products based in the Netherlands, Italy, China and the United Kingdom.

Kiwa

Kiwa is an independent highly qualified organization having certification as its core business. This is being supported by inspection, testing, technology, training and consultancy. Kiwa has customers in many sectors with an emphasis on water, energy, construction, infrastructure, automotive & transport, agro, feed & food, safety & security, health & care and environment.

Kiwa is a notified/competent body for:

- Low Voltage Directive
- EMC Directive
- Gas Appliance Directive
- Pressure Equipment Directive
- Drinking Water Directive
- Construction Products Directive

CB certification: your passport to the world

Exporting electric or electronic products – whether household appliances, industrial equipment or components – is impossible today without the appropriate certification. Kiwa Netherlands can help you avoid the complexity and cost of seeking compliance with a whole variety of national import requirements. Our electrical and electronic safety laboratory has been recognised by the IECEE as a Certification Body Testing Laboratory (CBTL). This means our testing services can provide you with CB certification. CB certificates are accepted in a large number of countries worldwide. What's more, Kiwa is also equipped to navigate you through national deviations from IEC standards in your export countries. The CB certification scheme is the first and only system offering mutual recognition of test results by associated certification bodies worldwide.



Testing of Electronics

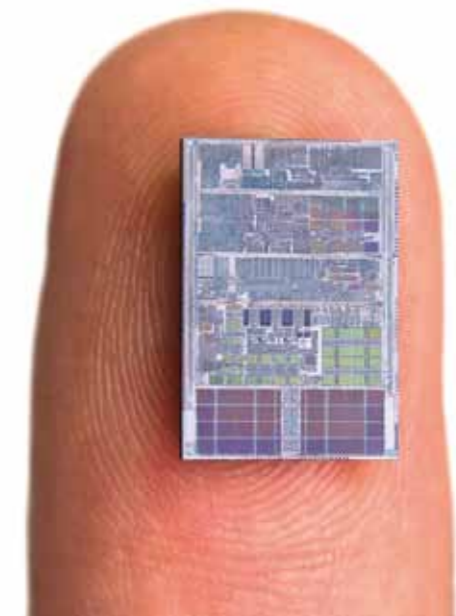
The electronics for controlling and safeguarding of gas appliances but also electrical appliances are becoming more complex. Kiwa as the leading party in Europe is also addressing all kind of standards under several Directives to address these controlling and so called safety electronics. Certifications for areas outside of Europe are also possible.

- 298/ CSA 22.2 / UL 372 for burner controls
- EN 13611 for safety electronics
- EN/IEC 60730 for household controls
- EN/IEC 60335 for household appliances
- EN 61508 for SIL assessment



The effective and efficient route to Canada and the US

How many manufacturers and exporters to North America have been driven to despair by long procedures and bureaucracy? Not to mention the time and costs it takes to ship samples to North America, only to hear that the product has not been approved. Fortunately, things can be different. Kiwa provides an effective and efficient way through our partners to obtain approval for the North American market. Our one stop services provides not only testing services according to the applicable UL and CSA standards but also preliminary investigations of the product during the development process to reduce the approval time and costs.



WORLD-WIDE ACCESS FOR YOUR ELECTRICAL/ ELECTRONIC PRODUCTS



Kiwa Nederland B.V.
Division Appliances & Installations
P.O. Box 137
7300 AC Apeldoorn
The Netherlands
Phone + 31 55 539 33 55
Fax + 31 55 539 36 85

Kiwa Italia S.pa.
Via Treviso 32/34
31020 San Vendemiano (TV)
Italy
Phone + 39 0 438 411 755
Fax + 39 0 438 22428

Kiwa Guangzhou
7th Floor, Block C
No.7 Caipin Road
Science City
Development Zone
Guangzhou, 510663P.R.
China
Phone + 86 20 3229 0216
Fax + 86 20 3229 0217

GASTEC at CRE Ltd
The Orchard Business Centre
Stoke Orchard, Cheltenham
Gloucestershire GL52 7RZ
United Kingdom
Phone + 44 1242 677 877
Fax + 44 1242 676 506

Kiwa España
Avda, Naranjos
33 Bajo Derecha
46011 Valencia
Spain
Phone +34 963 120 710
Fax + 34 963 608 293

Kiwa Turkey
Merkez Mahallesi
Cumhuriyet Caddesi
No. 23 Tuncer Apt. Daire: 2
Küçükyali – Matepe, Istanbul
Turkey
Phone + 90 216 417 74 17
Fax +90 216 417 77 30

eup@kiwa.nl
www.kiwa-eup.com



Solar PV Testing & Certification
In our accredited laboratory PV modules will be tested according safety and performance. In addition we also provide testing services for related components like inverters and grid connection.

Vision
Kiwa aims to continue to play a leading role as a Partner for Progress in the field of certification and research, strengthened by testing, inspection, training and consultancy. Why not visit us at www.Kiwa-eup.com.

Do you want to know more?
Let us deal with your testing and certification issue. We will be happy to provide you with any information you might need, so please contact us!

Kiwa
Business sector
Energy using Products

Arend van de Poll
Phone +31 555 393 385
E-mail eup@kiwa.nl

Geert Visser
Phone +31 555 393 238
Email eup@kiwa.nl



Benefit now from our high-speed, flexible and comprehensive testing & certification services

Whether you're exporting to Europe, Russia, North America or Asia, your electric or electronic products and components need the right certification to reach their destination unhindered. Kiwa Netherlands can help you get that certification now. Kiwa is an experienced testing and certification institute and a partner of Germany's VDE and the Canadian CSA. Our comprehensive services will open doors for your products onto every market in the world.



Kiwa has the expertise
to improve quality